

Supreme[®]

By Danner Manufacturing, Inc.

2008 SALTWATER & FRESHWATER
AQUARIUM PRODUCTS



Supreme[®]

By Danner Manufacturing, Inc.

FOR 75 YEARS... A HISTORY OF EXCELLENCE

Ever since our modest beginnings in 1934, Danner Manufacturing has developed and produced innovative products for aquarium hobbyists and professionals. We first introduced our original Heetmaster[®] aquarium heater and Dynamaster[®] air pumps which quickly became the standard to which others aspired. Seventy-five years later, our sophisticated filters and energy-efficient, magnetically driven and hybrid pumps are marketed and sold under the Supreme[®] umbrella. It is through these popular products that we have developed thousands of satisfied and loyal customers all over the country.

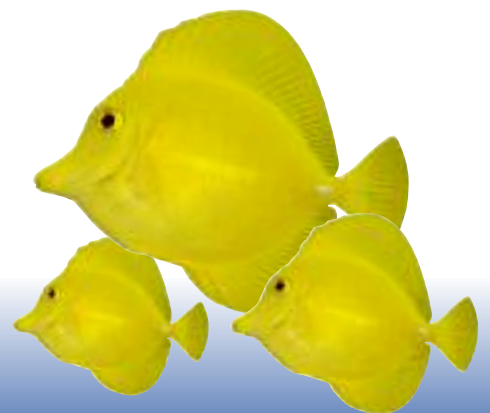
Displayed in this catalog you will find the latest offerings in our expanding line of aquarium products. Included are the new, higher capacity energy-efficient air pumps and our 4' and 8' merchandising displays. The displays are packed full of our most-wanted items, the ones that will turn a few square feet of floor space into a powerful profit center.

Whatever the size of your operation, you will find that our Supreme brand products will add renewed excitement and profitability to your aquarium business.



TABLE OF CONTENTS

	CLASSIC GENERAL PURPOSE UTILITY PUMPS .. 4
	AIR FRACTIONATING WATER PUMPS.....5
	SUBMERSIBLE/INLINE HY-DRIVE PUMP6
	PROTEIN SKIMMER POWER FILTER7
	OVATION SUBMERSIBLE POWER JET FILTERS ...8
	AQUARIUM AIR PUMPS9
	REPLACEMENT FILTER MEDIA & IMPELLERS10
	4' PLAN-O-GRAM11

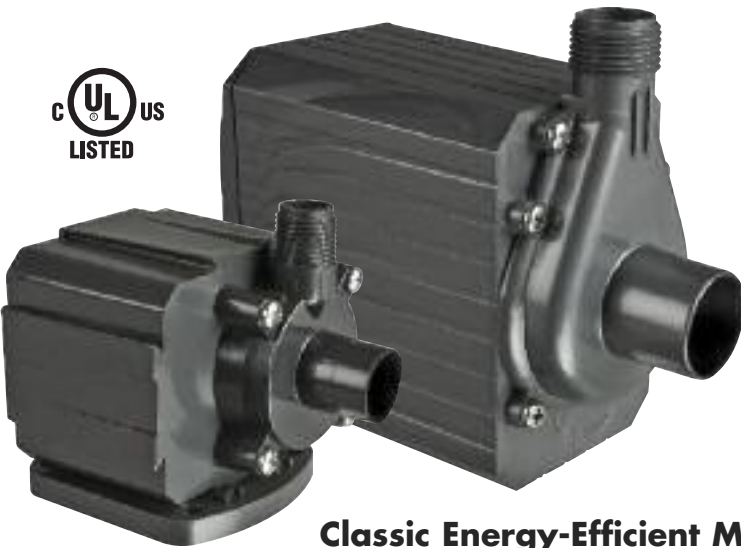


CLASSIC GENERAL PURPOSE UTILITY PUMP

EFFICIENT MAGNETIC DRIVE TECHNOLOGY

SUPREME® CLASSIC GENERAL PURPOSE UTILITY PUMPS have been designed to handle virtually any application where water has to be moved. They have been fulfilling the needs of professionals and hobbyists for over 10 years with efficient, quiet, and reliable 24/7 performance. Classic pumps are ideal in either saltwater or freshwater environments and operate equally well inline or submerged. With only one moving part, a ceramic impeller, and an epoxy-encased power unit, there's never a fear that it will contaminate the water with harmful oils or chemicals.

Available in pumping capacities from 250 to 2400 GPH. Ask your dealer which Supreme Classic General Purpose Utility Pump is best for your application.



FEATURES

- Reusable Debris Pre-Filter
- Operates Submerged or In-Line
- 18' Grounded Power Cord
- Models 2, 3, 5 and 7 - .5" FPT Inlet, MPT Outlet
- Models 9.5, 12 and 18 - .75" FPT Inlet, MPT Outlet
- Model 24 has 1" FPT Inlet, MPT Outlet
- 3 Year Limited Warranty

**Classic Energy-Efficient Magnetic Drive Pumps
are Available in Pumping Capacities from 250 to 2400 GPH.**

Model 2 Max. Flow Rate	UPC 02512 250 GPH	Model 9.5 Max. Flow Rate	UPC 02710 950 GPH
Model 3 Max. Flow Rate	UPC 02513 350 GPH	Model 12 Max. Flow Rate	UPC 02712 1200 GPH
Model 5 Max. Flow Rate	UPC 02515 500 GPH	Model 18 Max. Flow Rate	UPC 02718 1800 GPH
Model 7 Max. Flow Rate	UPC 02517 700 GPH	Model 24 Max. Flow Rate	UPC 02740 2400 GPH

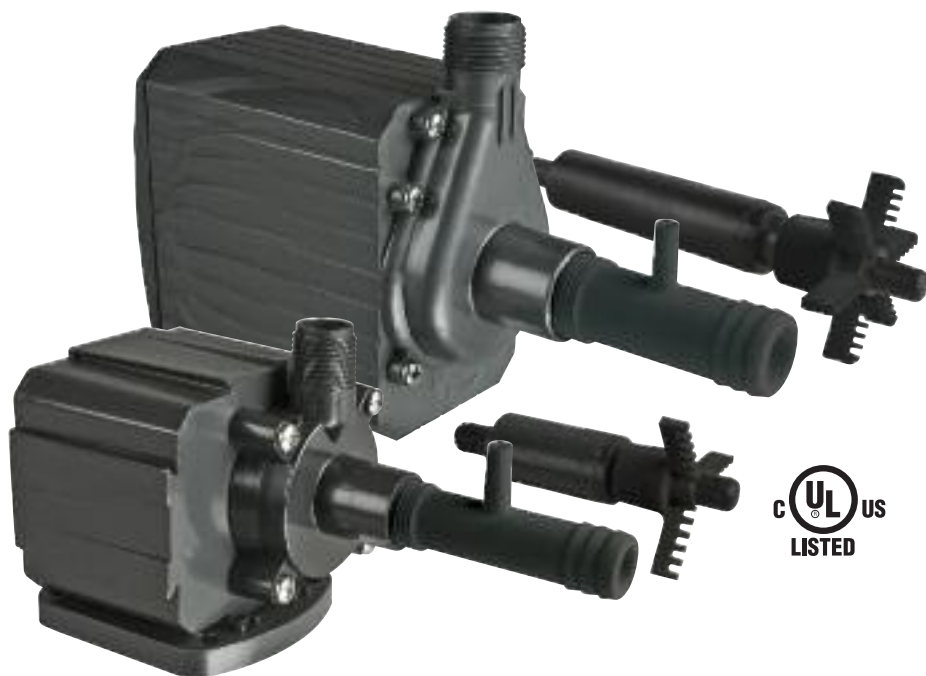
CLASSIC UTILITY PUMP SPECIFICATIONS

PUMP	ITEM#	NOMINAL	WATTS	GPH AT 0'	GPH AT 1'	GPH AT 3'	GPH AT 5'	GPH AT 7'	GPH AT 10'	GPH AT 15'	SHUTOFF
MODEL 2	02512	250	21	360	270	205	80	-	-	-	7.0'
MODEL 3	02513	350	37	480	405	335	270	170	-	-	10.5'
MODEL 5	02515	500	49	570	480	425	325	205	-	-	10.5'
MODEL 7	02517	700	60	640	530	460	390	290	90	-	11.65'
MODEL 9.5	02710	950	93	975	780	740	685	610	450	-	12.85'
MODEL 12	02712	1200	110	1200	970	880	800	715	580	-	13.5'
MODEL 18	02718	1800	150	1500	1325	1200	1100	1050	875	575	16.85'
MODEL 24	02740	2400	265	2175	1910	1710	1630	1345	1100	720	18'

AIR FRACTIONATING WATER PUMP

WITH AERATING IMPELLER AND VENTURI ASSEMBLY

THIS UNIQUE CIRCULATING PUMP has been designed specifically for use in saltwater and freshwater aquariums. It features a front-mount adjustable venturi inlet, a powerful ceramic/magnetic aerating impeller and an aerating tube with noise-suppressing muffler. Quiet and energy-efficient, Supreme magnetically driven utility pumps have been used for over a decade in homes and professional installations all over the country. The new aerating ceramic/magnetic impeller found in all our reliable Air Fractionating Water Pumps makes them particularly ideal for all saltwater applications.



FEATURES

- Front-Mount Adjustable Venturi
- Unique Ceramic Shaft Fractionating Impeller Design
- 18" Vinyl Aerating Tube with Noise-Suppressing Muffler
- Reusable Debris Pre-Filter
- Operates Submerged or In-Line
- 18' Grounded Power Cord
- Models 2, 3, 5 and 7 - .5" FPT Inlet, MPT Outlet and Venturi is Barbed to Accept .75" Flexible Tubing.
- Models 9.5, 12 and 18 have .75" FPT Inlet, MPT Outlet and Venturi is Barbed to Accept 1" Flexible Tubing
- 3 Year Limited Warranty

Model 2
Max. Flow Rate

UPC 06002
250 GPH

Model 9.5
Max. Flow Rate

UPC 06010
950 GPH

Model 3
Max. Flow Rate

UPC 06003
350 GPH

Model 12
Max. Flow Rate

UPC 06012
1200 GPH

Model 5
Max. Flow Rate

UPC 06005
500 GPH

Model 18
Max. Flow Rate

UPC 06018
1800 GPH

Model 7
Max. Flow Rate

UPC 06007
700 GPH

AIR FRACTIONATING WATER PUMP SPECIFICATIONS

MODEL	MAX. OUTPUT		MAX. PUMP HEIGHT		WATTS
	GPH	LITERS	FEET	METERS	
2	250	940	7	2.1	21
3	350	1300	10.5	3.2	37
5	500	1900	10.5	3.2	49
7	700	2650	11.65	3.5	60
9.5	950	3595	12.85	3.9	93
12	1200	4500	13.5	4.2	110
18	1800	6800	16.85	4.4	150

Flow rates above indicate full flow with no aeration introduced into the return water flow. As more air is introduced through the venturi assembly, flow rates will decrease.

SUBMERSIBLE/INLINE HY-DRIVE PUMP

FOR SALTWATER & FRESHWATER AQUARIUMS



**316 STAINLESS STEEL
ROTOR FOR GREATER
CORROSION & WEAR
RESISTANCE**

FEATURES

- Powerful, Efficient Hybrid Magnetic/Direct Drive Motor
- Energy-Efficient to Reduce Operating Cost
- Whisper-Quiet Operation
- Specifically Designed for Use with Saltwater and Freshwater Aquariums
- Fish-Safe Because No Oil is Used
- Continuous Duty Operation
- Integrated Filter Screen for Clog-Resistant Operation
- 18' Power Cord with Grounded Plug
- Inline and Submersible Operation
- Convenient Base Plate Included
- 1600, 2100 and 2600 - 1" FPT Inlet, MPT Outlet
- 3200, 4000 and 4800 - 1.5" FPT Inlet, MPT Outlet
- 6000 - 2" FPT Inlet, MPT Outlet
- 3 Year Warranty

1600 HY-Drive Pump
Max. Flow Rate

UPC 02583
1600 GPH

4000 HY-Drive Pump
Max. Flow Rate

UPC 02575
4000 GPH

2100 HY-Drive Pump
Max. Flow Rate

UPC 02582
2100 GPH

4800 HY-Drive Pump
Max. Flow Rate

UPC 02570
4800 GPH

2600 HY-Drive Pump
Max. Flow Rate

UPC 02581
2600 GPH

6000 HY-Drive Pump
Max. Flow Rate

UPC 02572
6000 GPH

3200 HY-Drive Pump
Max. Flow Rate

UPC 02580
3200 GPH

HY-DRIVE PUMPING SPECIFICATIONS

HY-DRIVE MODEL	ITEM#	NOMINAL	AMPS	WATTS	GPH AT 0'	GPH AT 1'	GPH AT 3'	GPH AT 5'	GPH AT 7'	GPH AT 10'	GPH AT 15'	GPH AT 20'	GPH AT 25'	SHUTOFF
1600	02583	1600	1.0 A	120	1750	1700	1575	1400	1250	1000	375	-	-	17'
2100	02582	2100	1.5 A	190	2125	2075	1900	1750	1600	1300	850	300	-	22.5'
2600	02581	2600	2.2 A	270	2700	2550	2525	2450	2225	1975	1625	1250	300	26.5'
3200	02580	3200	1.6 A	200	3500	3300	2700	2050	1650	650	-	-	-	12'
4000	02575	4000	1.9 A	230	4300	4000	3300	2700	2350	1475	-	-	-	13'
4800	02570	4800	2.0 A	250	5100	5000	4500	3900	3150	2350	800	-	-	18.5'
6000	02572	6000	5.5 A	675	5700	5500	5100	4700	4200	3400	2450	1150	-	22.5'

HY-Drive pumps are ideal for many water garden and aquarium applications. The rugged 316 Stainless Steel Rotor assures long-lasting performance in ponds and saltwater aquariums.

PROTEIN SKIMMER POWER FILTER

FOR SALTWATER AQUARIUMS

THE PATENTED SUPREME SKILTER™ IS A UNIQUE COMBINATION of a protein skimmer and an aerating power filter for use in saltwater aquariums. It is an effective primary or supplemental filter along with its operation as a skimmer.

The advanced venturi-type protein skimmer reflects the latest technology. Air is injected into the water creating millions of very fine bubbles. Potentially dangerous protein compounds and toxins adhere to the bubbles creating a froth. This frothy waste pushes its way up into the collection tray where it can be harmlessly disposed of.

The Skilter is built on a basic power filter platform. It features a large filter box, which can accommodate supplemental filter media in conjunction with the unique Bio-Matrix filter cartridge. It is powered by a powerful state-of-the-art motor using a single moving part. It is energy-efficient and economical to operate. Manufactured from high impact plastic, the Skilter will give years of trouble-free operation, even in the adverse conditions which are common to saltwater aquariums.

SKILTER 250

UPC 01031

This unit is ideal as a primary filter for aquariums from 10-55 gallons and can be used as a supplemental filter on larger aquariums. The protein skimmer will operate effectively on aquariums up to 125 gallons. The Skilter 250 has an effective flow rate of up to 250 gallons per hour. It is packaged complete and ready-to-go including a Bio-Matrix dual-media filter cartridge. Made in the USA.



SKILTER 400

UPC 01033

The Skilter 400 is the largest Skilter offered. It is ideal as a primary filter for aquariums up from 30 to 100 gallons and can be used as a supplemental filter on larger aquariums. The protein skimmer is effective for aquariums up to 125 gallons. The larger, powerful motor is rated for a flow of up to 400 gallons per hour. The Skilter 400 is packed with **two** dual-media Bio-Matrix cartridges. Made in the USA.



SUBMERSIBLE POWER JET FILTERS

FOR AQUARIUMS AND TERRARIUMS

THE OVATION FILTRATION PUMPS have been designed for hobbyists looking for powerful, quiet, and effective filtration for their home aquariums and terrariums. They can be used for installations from 10 to 80 gallons if used singly, or larger installations if more than one pump is employed. They offer the right combination of mechanical, biological and chemical filtration to assure a clean habitat for aquatic pets.

Each Ovation Series pump includes an adjustable spray bar, an airflow regulator, and two filtration elements (a sponge and a carbon filter). Units can be mounted vertically or, for terrariums, in a low-profile horizontal position using the included suction cups.



FEATURES

- Innovative Design Filters up to 265 GPH
- Dual Filter Elements Provide Excellent Mechanical and Biological Filtration
- Adjustable Air Regulator Allows Aeration Flow Control
- Includes Spray Bar for Enhanced Aeration
- Mounts Easily for Submersed use in any Terrarium or Aquarium
- Can be Operated in any Position, Horizontal or Vertical
- Smooth, Ultra-Quiet Operation
- Perfect for Odd-Shaped and Shallow Habitats

Ovation-210	UPC 01025
Max. Flow Rate	53 GPH
Recommended Tank Size*	Up to 15 Gallons

Ovation-700	UPC 01027
Max. Flow Rate	185 GPH
Recommended Tank Size*	Up to 50 Gallons

Ovation-380	UPC 01026
Max. Flow Rate	100 GPH
Recommended Tank Size*	Up to 25 Gallons

Ovation-1000	UPC 01028
Max. Flow Rate	265 GPH
Recommended Tank Size*	Up to 80 Gallons

*Single filter use. You may use more than one filter for larger tanks.

AQUARIUM AIR PUMPS

FOR SALTWATER & FRESHWATER AQUARIUMS

THE PONDMASTER AP-SERIES AIR PUMPS have been designed to satisfy the requirements of a multitude of water-related applications. All AP-Series air pumps operate on standard 110V electric and come with a 6' power cord. The non-oil lubricated motor is designed to operate efficiently and save energy. For outdoor applications, it is recommended that the unit be enclosed to protect it from the elements. These beautifully designed, environmentally friendly pumps can be used for: oxygenating aquariums for a cleaner aquatic environment, promoting healthier fish and aquatic plant life, increasing the breakdown of fish waste and driving protein skimmers.

FEATURES

- Energy-Efficient Motor
- Easy to Use
- Quiet Operation
- High Volume with Steady Air Flow
- No Lubrication Necessary
- Single Outlet Discharge
- Air Diffuser Included



AP-20	UPC 04220
Air Volume	1700 cu.in/min
Max. Water Depth	7'
Cord Length	6'
Noise Level	40 dba
Watts	20
Weight	5 lbs
Air Diffuser Outlets	6
Pressure	4.0 psi
Note: Can Accept 1/2" I.D. Tubing to Extend Distance between Air Pump and Diffuser	

AP-60	UPC 04260
Air Volume	5500 cu.in/min
Max. Water Depth	9.6'
Cord Length	6'
Noise Level	45 dba
Watts	50
Weight	14 lbs
Air Diffuser Outlets	14
Pressure	5.66 psi
Note: Can Accept 3/4" I.D. Tubing to Extend Distance between Air Pump and Diffuser	

AP-40	UPC 04240
Air Volume	2900 cu.in/min
Max. Water Depth	10'
Cord Length	6'
Noise Level	40 dba
Watts	40
Weight	9 lbs
Air Diffuser Outlets	12
Pressure	5.8 psi
Note: Can Accept 5/8" I.D. Tubing to Extend Distance between Air Pump and Diffuser	

AP-100	UPC 04280
Air Volume	9150 cu.in/min
Max. Water Depth	11.5'
Cord Length	6'
Noise Level	45 dba
Watts	100
Weight	16.5 lbs
Air Diffuser Outlets	33
Pressure	6.53 psi
Note: Can Accept 3/4" I.D. Tubing to Extend Distance between Air Pump and Diffuser	

REPLACEMENT FILTER MEDIA & IMPELLERS

FOR ALL FILTERS AND PUMPS

SUPREME has an extensive line of replacement media carefully designed to maintain the effectiveness of the original filter. Coarse polyester and foam offer biological filtration, carbon impregnated media offers chemical and biological filtration, all offer mechanical filtration. When a pump impeller wears out, always recommend a genuine, original equipment replacement.



OVATION MEDIA

Ovation 210 Replacement Media	UPC 11725
Ovation 380 Replacement Media	UPC 11726
Ovation 700 Replacement Media	UPC 11727
Ovation 1000 Replacement Media	UPC 11728

BIO-MATRIX CARTRIDGES AND MEDIA

Bio-Matrix Cartridge for Skilter	1 Pack	UPC 11802
Bio-Matrix Cartridges	4 Pack	UPC 11804
Bio-Matrix Media Combo	12 Carbon, 12 Polyester	UPC 11812
4x4 Replacement Bio-Matrix Media		UPC 11844
Polyester Bio-Matrix Media	12 Pack	UPC 11866

OVATION IMPELLERS

Ovation 210 Impeller Assembly	UPC 11755
Ovation 380 Impeller Assembly	UPC 11756
Ovation 700 Impeller Assembly	UPC 11757
Ovation 1000 Impeller Assembly	UPC 11758

SKILTER IMPELLERS

Skilter 250	UPC 11855
Skilter 400	UPC 21855

PUMP MODEL

FRACTIONATING AIR PUMP IMPELLERS

Models 2, 3, 5, 7	Venturi Assembly with Tubing and Muffler	UPC 16505
Model 2	Fractionating Impeller Assembly	UPC 16555
Model 3, 5	Fractionating Impeller Assembly	UPC 16575
Model 7	Fractionating Impeller Assembly	UPC 16585
Models 9.5, 12, 18	Venturi Assembly with Tubing and Muffler	UPC 16705
Model 9.5	Fractionating Impeller Assembly	UPC 16745
Model 12	Fractionating Impeller Assembly	UPC 16755
Model 18	Fractionating Impeller Assembly	UPC 16775

SUPREME 4' PLAN-O-GRAM

A POWERFUL SELLING AID

WE'VE LOADED THIS DYNAMIC 4' DISPLAY

with the energy-efficient pumps you'll need to satisfy most home and professional aquarium applications. From 250 to 4000 GPH, these rugged pumps offer reliable, hush-quiet operation using time-tested magnetic drive technology.

8' Plan-o-Gram also available, call for more information.



SUPREME 4 FT PLAN-O-GRAM - UPC 22504

TOP SHELF

	ITEM UPC	QUANTITY
Model 2, 250 GPH Pump with Venturi & Fractionating Impeller	06002	6
Model 3, 350 GPH Pump with Venturi & Fractionating Impeller	06003	6
Supreme Air Pump AP-20	04220	2
Supreme Air Pump AP-40	04240	2

SECOND SHELF

Model 5, 500 GPH Pump with Venturi & Fractionating Impeller	06005	6
Model 7, 700 GPH Pump with Venturi & Fractionating Impeller	06007	6
Model 9.5, 950 GPH Pump with Venturi & Fractionating Impeller	06010	2
Model 12, 1200 GPH Pump with Venturi & Fractionating Impeller	06012	2

THIRD SHELF

Model 2, 250 GPH Classic Utility Pump	02512	6
Model 3, 350 GPH Classic Utility Pump	02513	6
Model 9.5, 950 GPH Classic Utility Pump	02710	2
Model 12, 1200 GPH Classic Utility Pump	02712	2

FOURTH SHELF

Model 5, 500 GPH Classic Utility Pump	02515	6
Model 7, 700 GPH Classic Utility Pump	02517	6
Model 18, 1800 GPH Classic Utility Pump	02718	2
Model 24, 2400 GPH Classic Utility Pump	02740	2

BOTTOM SHELF

Supreme Hy-Drive 1600 GPH Pump with Prefilter Screen	02583	2
Supreme Hy-Drive 2600 GPH Pump with Prefilter Screen	02581	2
Supreme Hy-Drive 4000 GPH Pump with Prefilter Screen	02575	2

SPECIFICATIONS ARE SUBJECT TO CHANGE WITHOUT NOTICE
DANNER MANUFACTURING, INC.

Islandia, New York 11749-1489 | 631.234.5261

©2008 Danner Mfg. Inc. | Visit our web site at www.dannermfg.com

